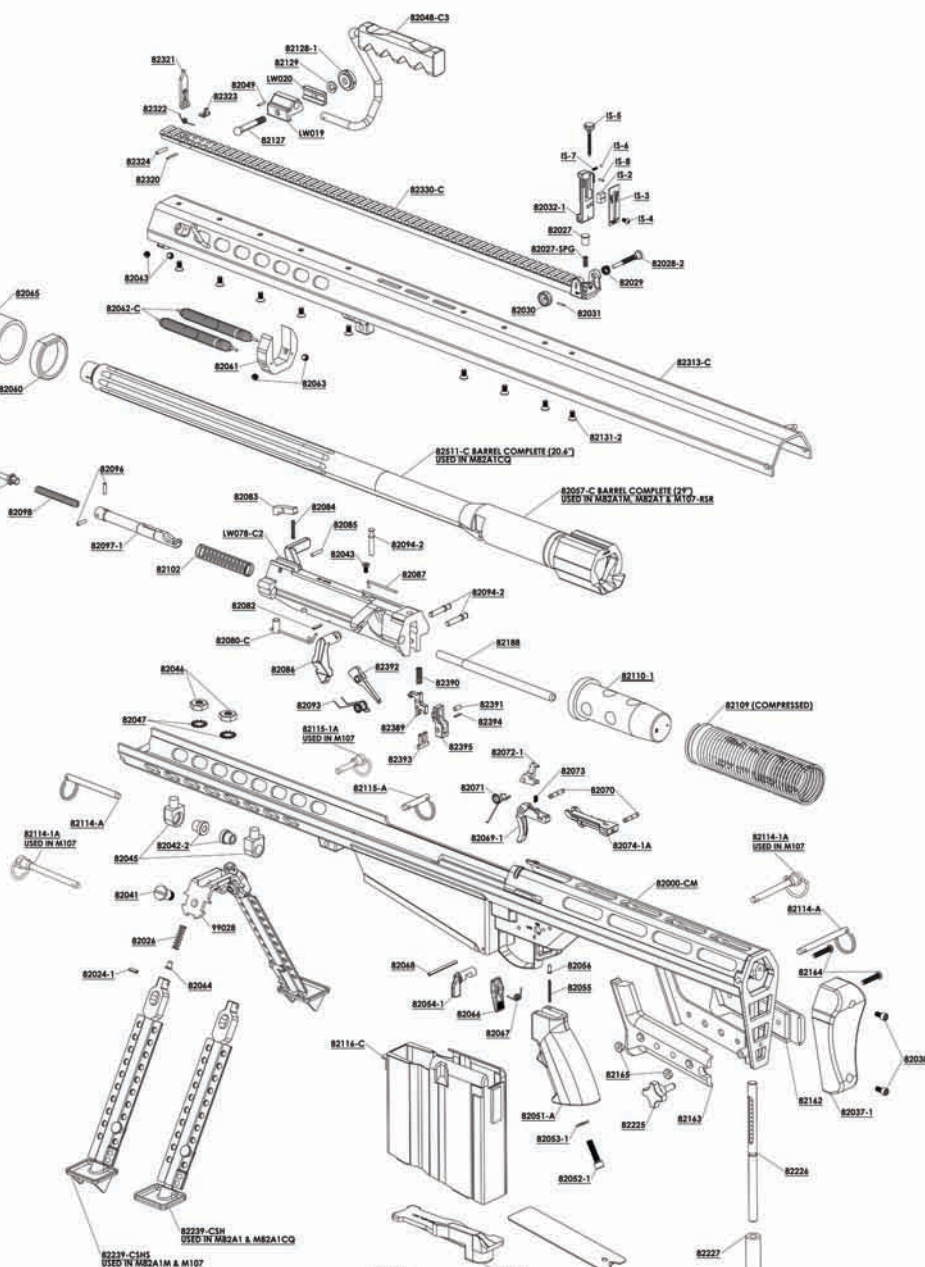


PART NO.	DESCRIPTION	QTY.	PART NO.	DESCRIPTION	QTY.
82000-CM	LOWER RECEIVER COMPLETE	1	82103	EJECTOR	1
82024-1	BIPOD PIN	2	82104	EJECTOR SPRING	1
82026	BIPOD SPRING	2	82106	EXTRACTOR	1
82027	REAR SIGHT BASE DETENT	1	82107	EXTRACTOR SPRING	1
82027-SPG	REAR SIGHT BASE SPRING	1	82108	EXTRACTOR PLUNGER	1
82028-2	WINDAGE SCREW	1	82109	MAIN SPRING	1
82029	WINDAGE SCREW SPRING	1	82110-1	MAIN SPRING BUFFER	1
82030-1	WINDAGE KNOB	1	82114-A	REAR ASSEMBLY PIN	2
82031	WINDAGE KNOB PIN	1	82115-A	MIDLOCK ASSEMBLY PIN	1
82032-1	REAR SIGHT BODY	1	82114-A	REAR ASSEMBLY PIN	2
82037-1	RECOIL PAD	1	82115-A	MIDLOCK ASSEMBLY PIN	1
82038	RECOIL PAD SCREW	2	82116-C	MAGAZINE COMPLETE	1
82041	BIPOD SCREW	2	82120-1	MAGAZINE FOLLOWER	1
82042-2	BIPOD SHIM BUSHING	2	82121-1	MAGAZINE SPRING	1
82043	ACCELERATOR SPRING SCREW	1	82122	MAGAZINE FLOOR PLATE	1
82045	YOKE MOUNT	2	82127	SCOPE RING BOLT	1
82046	YOKE MOUNT NUT	2	82128-1	CARRYING HANDLE NUT	1
82047	YOKE MOUNT WASHER	2	82129	SCOPE RING WASHER	1
82048-C3	CARRYING HANDLE COMPLETE	1	82131-2	SCOPE BASE SCREW	9
82049	CARRYING HANDLE PIN	1	82159-2	MUZZLE BRAKE	1
82051-A	PISTOL GRIP STOCK ASSEMBLY	1	82159-S	MUZZLE BRAKE SCREW	2
82052-1	PISTOL GRIP STOCK SCREW	1	82159-WA	MUZZLE BRAKE WASHER	2
82053-1	PISTOL GRIP STOCK WASHER	1	82162	REAR HAND GRIP (RIGHT)	1
82054-1	SAFETY	1	82163	REAR HAND GRIP (LEFT)	1
82055	SAFETY SPRING	1	82164	REAR HAND GRIP SCREW	2
82056	SAFETY DETENT	1	82165	REAR HAND GRIP NUT	2
82057-C	BARREL COMPLETE (20")	1	82168	ACCELERATOR ROD	1
82511-C	BARREL COMPLETE (20.8")	1	82225	LOCK KNOB	1
82060	BATTERY BUMPER	1	82226	ELEVATION SCREW	1
82061	BARREL KEY	1	82227	ELEVATION COLLAR	1
82062-C	BARREL SPRING ASSEMBLY	2	82228	MONOPOD FOOT WASHER	1
82063	BARREL SPRING SCREW	4	82229	MONOPOD FOOT	1
82064	BIPOD DETENT	2	82230	MONOPOD FOOT SCREW	1
82065	BARREL BUMPER IMPACT	1	82239-CSH	BIPOD LEG COMPLETE (FLAT)	2
82066	MAGAZINE CATCH	1	82239-CSHS	BIPOD LEG COMPLETE (SPIKE)	2
82067	MAGAZINE CATCH SPRING	1	82313-C	UPPER RECEIVER COMPLETE	1
82068	MAGAZINE CATCH PIN	1	82330	FRONT SIGHT CATCH PIN	1
82069-1	TRIGGER	1	82321	FRONT SIGHT	1
82070	TRIGGER HOUSING PIN	2	82322	FRONT SIGHT SPRING	1
82071	TRIGGER SPRING	1	82323	FRONT SIGHT CATCH	1
82072-1	DISCONNECTOR	1	82324	FRONT SIGHT PIN	1
82073	DISCONNECTOR SPRING	1	82330-C	SCOPE BASE	1
82074-1A	TRANSFER BAR ASSEMBLY	1	82389	SEAR	1
82080-C	CAM PIN COMPLETE	1	82390	SEAR SPRING	1
82082	CAM PIN PIN	2	82391	SEAR PIN	1
82083	BOLT LATCH	1	82392	COCKING LEVER	1
82084	BOLT LATCH SPRING	1	82393	SEAR LEVER	1
82085	BOLT LATCH PIN	1	82394	SEAR LEVER PIN	1
82086	ACCELERATOR	1	82395	SEAR HOUSING	1
82087	ACCELERATOR SPRING	1	98028	BIPOD YOKE	1
82093	COCKING LEVER SPRING	1	IS-2	REAR SIGHT APERTURE	1
82094-2	BOLT CARRIER PIN	3	IS-3	REAR SIGHT SCALE	1
82095-1	FRING PIN	1	IS-4	REAR SIGHT SCALE SCREW	1
82096	FRING PIN PIN	2	IS-5	ELEVATION SCREW	1
82097-1	FRING PIN EXTENSION	1	IS-6	ELEVATION SCREW BALL	1
82098	FRING PIN EXTENSION SPRING	1	IS-7	ELEVATION SCREW SPRING	1
82101-C	BOLT COMPLETE	1	IS-8	ELEVATION SCREW PIN	1
LW019	CARRYING HANDLE MOUNT	1			
LW020	CARRYING HANDLE MOUNT CLAMP	1			
LW078-C2	BOLT CARRIER COMPLETE	1			



**MODEL 82A1 SERIES**